



CubeRunner

SQL Server DTS Edition

Simple



Tired of Moving Cubes Around?



*PowerCube Build and Deployment
made easy with CubeRunner*

Smart

Effective

CubeRunner's SQL Server DTS Edition streamlines PowerCube delivery across the enterprise.





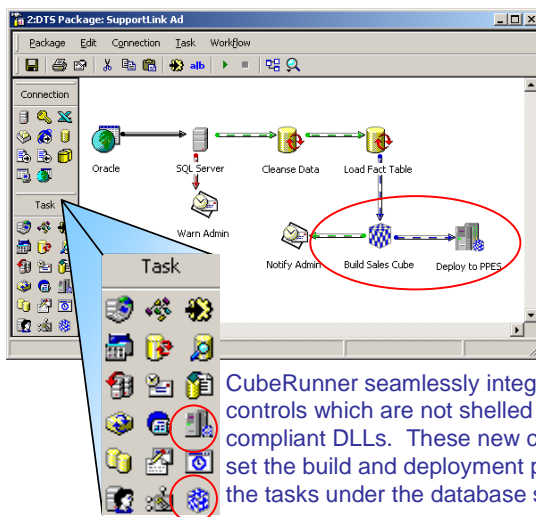
Adding Value and Integrity to Your Cognos Business Intelligence Investment

Organizations serious about performance management rely on Cognos Business Intelligence to uncover actionable intelligence. However, organizations are at risk when the business intelligence data is stale, or worse, unavailable. CubeRunner reduces this risk by automating the rollout of Cognos PowerPlay PowerCubes across the network in a reliable and timely manner.

The reality is that over 80% of Cognos PowerPlay Business Intelligence interruptions are caused by factors outside the Cognos environment. Issues such as changing network security settings, hardware upgrades and unavailable devices. Using CubeRunner, your IT staff can deliver Cognos Business Intelligence data with unmatched reliability and efficiency - eliminating the 80% failure factor. The effect: Greater return on your Business Intelligence investment through increased uptime/system availability, improved business user effectiveness and confidence in the decision making process.

Overview of CubeRunner for SQL Server DTS

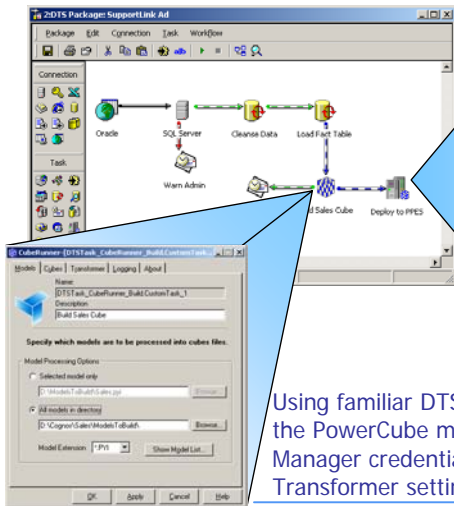
CubeRunner is the first commercially available application focused solely on the unique build, deploy and activation requirements of PowerCubes. CubeRunner gives administrators a step-by-step, best practices approach to building, deploying and centrally managing PowerCube delivery across the enterprise. The underlying technology speaks "PowerPlay-ese" through APIs and enables you to implement these repeatable best practices and reliably manage PowerCube delivery end-to-end.



The SQL Server edition of CubeRunner completes the DTS facility for Cognos administrators by integrating PowerCube build and deployment tasks as discreet ETL components that can be used anywhere within the data movement process.

CubeRunner seamlessly integrates two new custom controls which are not shelled tasks, but DTS compliant DLLs. These new controls enable you to set the build and deployment properties and execute the tasks under the database scheduler.

Without CubeRunner, Cognos administrators are forced to develop batch scripts coupled with shelled tasks to build and deploy PowerCubes within the SQL Server DTS environment. These solutions are inflexible, non-scalable, high-maintenance and unreliable. With CubeRunner, administrators can develop a properly defined promotion process in a DTS integrated and operationally robust environment.



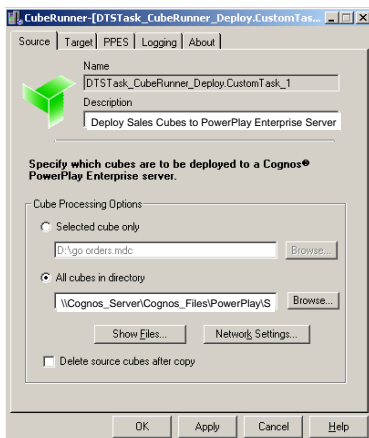
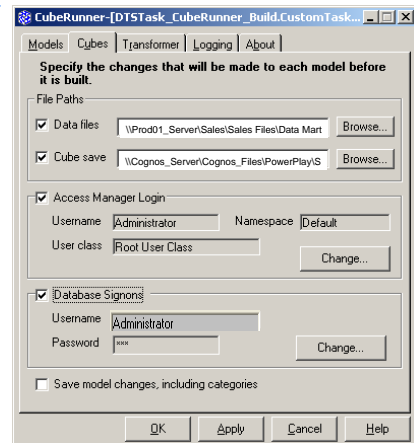
The PowerCube deployment task moves PowerCubes across the network, backs up the previous versions and optionally enables PowerCubes in the PowerPlay Enterprise Server.



Using familiar DTS dialogs, administrators specify the PowerCube models, data sources, Access Manager credentials, cube file output locations and Transformer settings.

CubeRunner has multiple layers of intelligence. For instance, prior to Transformation processing, CubeRunner internally inspects each PowerCube model for inconsistencies and corrects those inconsistencies on-the-fly with your supplied requirements. These include Access Manager credentials, data source paths (e.g. IQDs), database sign-ons and PowerCube destination paths. Furthermore, CubeRunner jobs automatically delete suspended PowerCube models, manage all network security requirements in unattended mode and employ self-healing features (e.g. recovery, retry and resume processing).

Forget to update the model properties for production? CubeRunner uses these parameters as the model property defaults and dynamically corrects model properties on the fly prior to Transformer processing.



Want to transparently enable PowerCubes in the PowerPlay Enterprise Server? CubeRunner automatically disables the active PowerCube version, copies it to a backup location and copies in and enables the new PowerCube.

The CubeRunner development team has applied years of Cognos PowerPlay experience with extensive Windows and network architecture expertise to develop the first truly automated means for reliable PowerCube delivery. It is fundamentally *simpler*, *smarter* and more *effective* than traditional scripts, macros, shelled tasks and homegrown VB applications. Check out the comparison chart below to see what we mean.

Technical Requirements

- Windows Server or Workstation - Win2k (NT5), or Windows XP (2003)
- Cognos PowerPlay Version 6 +
- SQL/Server 2000

To learn more...

Visit our web site to learn more about CubeRunner's Windows and SQL/Server DTS product editions. The site includes free 30 - day evaluation downloads, complete feature comparison charts, product pricing and a short product tour illustrating practical application of CubeRunner and how best practices are automatically enforced. Or better yet, contact us directly at Sales@CubeRunner.com or phone (602) 896-9594

SQL Server DTS Edition

Building Cubes	CubeRunner	Macros	Scripts
Processes individual or directory of models	✓	✓	✓
Builds models of any extension (PYI, MDL)	✓	✓	✓
Manages suspended models	✓	✓	
Manages Transformer INI file settings	✓		✓
No changes required to add new models	✓	✓	✓
Comprehensive progress and error reporting	✓		
Error retry capabilities	✓	✓	
<i>Real-time correction of model properties</i>			
Change IQD source paths to match server	✓		
Change MDC target paths to match server	✓		
Change database sign-ons to suit environment	✓		
<i>Tighter security implementation</i>			
Transparently manage Access Manager login	✓	✓	
Manages multiple network login credentials	✓	✓	
All passwords encrypted when stored	✓		
Deploying Cubes			
Deploy individual or directory of cubes	✓	✓	✓
Delete source cubes after copy – saves disk space	✓	✓	✓
<i>Fully managed communication with Enterprise Server</i>			
Option to automatically add new cubes to PPES	✓	✓	✓
Add to chosen PPES folder path	✓		
Create PPES folder path if not exist	✓		
Enable/disable cubes – individual or whole server	✓	✓	✓
<i>Fully managed network transfers</i>			
Multiple login credentials to access network shares	✓		
Backup of target cubes before overwrite	✓	✓	✓
Controlled deletion of backup history	✓	✓	
Execution			
Uses DTS flow logic (on success, on failure, etc)	✓	✓	
Unlimited combinations of build and deploy possible	✓		
DTS compliant DLL's, not shelled processes	✓		
Build dev & prod cubes from one set of models	✓		
Cube build becomes a genuine ETL process	✓		
Usability			
Easy to use graphical interface	✓		
Online, context sensitive help system	✓		
Remote editing of server based job properties	✓		
Implemented in minutes/hours instead of days/weeks	✓		
No programming skills required (in-house or consultant)	✓		



CubeRunner could be building and deploying your PowerCubes or you can continue maintaining batch scripts or macros ... It's your choice!



www.CubeRunner.com